



# YOUR BLUEPRINT

Join the movement for a sustainable built environment,  
where people and planet can thrive.

# Contents



Welcome to the  
Green Building  
Council South  
Africa (GBCSA)  
Membership Guide.

01 A Message from the CEO

02 Key impact areas

03 GBCSA Membership

04 Membership for Organisations

05 One Membership

06 Become a Member Today

07 Application Process

08 Membership Fees

09 Contact



## A Message from the CEO

### Georgina Smit

The built environment sits at the centre of both our climate challenge and economic opportunity. Globally, the industry accounts for nearly 38% of carbon emissions, but also represents one of the most immediate and scalable drivers we have for meaningful change.

The decisions we make today in design, construction and operations will dictate the value and resilience of our assets for the next fifty years. Sustainability is no longer a 'future' consideration; it is a present-day imperative, increasingly linked to asset performance, risk mitigation, and long-term profitability. Across South Africa and the continent, we are witnessing a decisive shift from mere compliance toward true market leadership.

At the GBCSA, our mission is to accelerate this transition. Since 2007, we have acted as a catalyst for change.

Through our certification tools, technical expertise, advocacy, and education platforms, we provide the frameworks and support needed for our members to deliver measurable impact.

Our strength isn't just in our tools; it's in our network. We bring together developers, investors, and policymakers who understand that we cannot scale these outcomes in isolation. Membership with GBCSA is a commitment to a movement that is fundamentally redefining what value looks like in the built environment. With the right partnerships, we can deliver a low-carbon, resource-efficient South Africa that provides both environmental and economic returns.

I invite you to take your seat at the table. Let's build a resilient future, together.

**Georgina Smit,**  
CEO, GBCSA



We are proud to be part of a global network of like-minded organisations, including the World Green Building Council (World GBC), with whom we are members and collaborate closely.

Take your place at the forefront of change. **Join us today** and help shape a greener, more resilient future.

**GBCSA is a Level 3 B-BBEE Contributor.**  
GBCSA is registered as a Nonprofit Company operating on a non-profit basis for the public benefit.



# 18 Years & over 1 300 green building projects certified, and counting

## We are powered and inspired by a diverse member community

Our member network is made up of 500+ organisations and individuals committed to driving the green building movement forward. This includes architects, engineers, developers, investors, builders, product manufacturers, researchers and others who share a common goal of creating sustainable and environmentally responsible built environments.

Our network extends across Africa and the globe. As one of 70+ members of the World Green Building Council (WGBC) and an active member of the WGBC African Regional Network (ARN), we are constantly connected to a community of experts at home and abroad.

## Key impact areas



### We Educate

We equip individuals with the knowledge and skills to drive change in their projects and organisations. We do this through the GBCSA Academy as well as through more informal learning events.

**GBCSA members enjoy significant discounts on quality, accessible training and accreditation programmes with GBCSA Academy.**



### We Advocate

As the hub for green building knowledge in South Africa, we advance and engage stakeholders across society. Activities range from events and research collaborations to government advisory and policy development.

**We act for our members to positively influence policy and standards development, laying the foundations for a policy and business environment in which green buildings can thrive.**



### We Certify

We rate the sustainability of buildings and precincts through certification programmes that meet rigorous international sustainability standards. These include Green Star, Net Zero and EDGE certifications.

**By certifying your fitout, building or precinct with GBCSA you are achieving recognition and validation from the leader in green building certification in South Africa. As a member, you enjoy significant discounts on certification fees.**

## An organisation with a lasting impact

What we've achieved since establishment of our certification systems in 2009

**1 364**

Projects certified green

**23.3 million**

square metres certified

**2 500+**

Green building professionals trained

# GBCSA Membership

By joining GBCSA, you're not just signing up for a membership, you're unlocking your potential to be a key driver in transforming the built environment, amplifying your influence, and positioning yourself as a leader in this essential movement. You'll also benefit from a wealth of services, opportunities, and cost-savings.

GBCSA membership is designed to grow with you and your organisation. ONE membership is designed for green champions acting in their individual capacity, while organisational membership offers increased exposure, and opportunities for team empowerment and building certification.

## GBCSA offers two categories of membership

### Organisational Membership

**Ideal for organisations of all sizes. Organisational membership entitles you and your team to an extensive set of benefits.**

These include access to significant discounts, networking opportunities, and a wealth of resources and industry insights, empowering your organisation to reach its sustainability goals, and make a significant positive impact on the built environment.

Click on your organisation's core business focus to learn more about benefits specific to your sustainability goals.

→ [Property Developers](#)

→ [Property Investors and Owners](#)

→ [Property Managers](#)

→ [Financial Services](#)

→ [Corporate Tenants & Retailers](#)

→ [Building Contractors](#)

→ [Building Product Manufacturers & Distributors](#)

→ [Professional Services](#)

→ [Research and Education](#)

→ [Government and Utilities](#)



### ONE Membership

**Designed for singular professionals who are green champions in their own circles of influence.**

The ONE membership category is designed for individuals from diverse professional backgrounds who share a commitment to sustainable building practices. Whether you are a practicing freelancer, employed in a non-member company, a student or researcher or a retired professional, GBCSA provides you with a platform to connect, learn, and grow within the green building community.

By joining the GBCSA as an individual member, you can enhance your professional development, expand your network, and actively contribute to the advancement of sustainable building practices. Embrace the opportunities to learn, grow, and make an impact.

→ [Click here for more on GBCSA ONE membership](#)

## About Membership

“

**Our partnership with GBCSA has been instrumental in advancing our company's commitment to sustainability and environmental responsibility.**

Collaborating with GBCSA has allowed us to bolster our sustainability practices, aligning perfectly with our global strategy of promoting energy efficiency and reducing our carbon footprint.

GBCSA's longstanding reputation for excellence in the field of sustainable development has provided us with invaluable insights and best practices, which have enhanced our product offerings and operational methodologies. Their expertise has enabled us to not only meet but exceed local industry standards, ensuring that our solutions are at the forefront of innovation and environmental stewardship.

This partnership has also facilitated greater engagement with stakeholders who prioritise green building initiatives, expanding our network and opening up new opportunities for growth.

**Marketing Manager,**

Product Manufacturer and Distributor

”



# Membership for Organisations

Membership that grows as you do

Join the leaders who are transforming the built environment, in South Africa and beyond

01

## Networking Opportunities

GBCSA membership offers access to numerous networking events, including our annual GBCSA Convention, facilitating connections between a broad network of industry professionals.

**Connect with new leads, collaborate on strategic partnerships, facilitate the sharing of best practices, and expand business opportunities.**

02

## Market Visibility

GBCSA Members benefit from enhanced brand recognition and visibility through GBCSA platforms such as directories, +Impact magazine, and events.

**GBCSA membership demonstrates values alignment, and profiles your commitment to sustainability, attracting eco-conscious partners, tenants, clients, and investors.**

03

## Educational Resources and Training

Members gain discounted access to a comprehensive suite of training and workshops at GBCSA Academy.

**Empower your workforce to stay ahead with industry-leading, recognised training and qualifications on sustainable practices, regulatory standards and market adaptation.**

04

## Advocacy and Influence

GBCSA serves as a collective voice for its members, advocating for favourable policies and regulations that support sustainable building practices, and lay the critical foundations for the green economy.

**Leverage GBCSA's established relationships to influence sustainable building policies and create a favourable investment and regulatory environment.**

05

## Discounts and Offers

Members enjoy various discounts on GBCSA certifications, training, and free or discounted access to events, including discounted tickets to the annual GBCSA Convention.

**Save costs through GBCSA membership, and enjoy multiple value-added services to suit your organisation's needs.**

06

## Policy Updates

Members receive timely updates on the latest changes in building codes, sustainability regulations, and government policies.

**Stay informed through GBCSA to ensure you're compliant, and maintain your competitive edge.**

07

## Research and Information

Members have access to GBCSA's cutting-edge research, technical manuals, case studies, and publications.

**These resources provide you with valuable insights into industry trends, best practices, and economic conditions, supporting more informed decision-making and strategic planning.**

08

## Technical Assistance

GBCSA offers expert support to members on integrating sustainable practices into their projects and operations.

**Benefit from specialised assistance, ensuring compliance with green building standards and enhancing overall project quality and sustainability.**

09

## Community Engagement

Partner with GBCSA on impactful green building initiatives, such as research initiatives, sponsoring awards or contributing to technical tool development.

**Enhance your corporate social responsibility profile, while supporting sustainable development in the built environment.**



# ONE Membership

Membership that grows as you do

Tailored to benefit the individual: a platform to connect, learn, and grow within the green building community

01

## Networking Opportunities

Connect with a network of professionals and organisations dedicated to sustainable building practices.

**Participate in GBCSA's annual Convention and networking events to share ideas, collaborate, and build valuable industry relationships.**

02

## Educational Resources and Training

Access a wealth of educational materials, courses, and workshops, as well as green building practices, standards, and innovations.

**Members receive discounted rates, empowering you to stay ahead in your field and continuously enhance your skills.**

03

## Advocacy and Influence

Be part of the green building community's voice in advocating for sustainable building practices and policies.

**GBCSA's established relationships and partnerships amplify your ability to influence policy and standards, creating a more favourable environment for sustainable building practices.**

04

## Research and Information

Stay at the forefront of green building industry knowledge with access to the latest research, best practices, and industry trends.

**GBCSA provides technical manuals, research reports, case studies, and market analysis, ensuring you have the information needed to excel in sustainable building.**

05

## Discounts and Offers

Enjoy discounts on training courses, free event access, and discounted tickets to the annual GBCSA Convention.

**GBCSA ONE members enjoy unlimited access to all GBCSA online events. In-person event access includes free access to two Planet Shaper events per year, and discounts on any events thereafter. Be part of Africa's leading green building gathering, and more.**

06

## Policy Updates

GBCSA keeps its members ahead of regulatory changes.

**Stay informed with regular updates and thought leadership on changes in building codes, standards, and government policies affecting green building practices.**

07

## Community Engagement

Participate in and contribute to projects, research, and initiatives that promote sustainability in the built environment.

**Engage with a community of like-minded individuals and organisations dedicated to transforming the built environment.**



# Become a Member Today



## GBCSA membership

means access to a wealth of services, opportunities, and cost-saving advantages to support your organisation's sustainability journey. Become a part of the GBCSA community and contribute to shaping a sustainable future for South Africa's built environment.

## How to join

Joining is easy via the GBCSA website, or simply reach out to our membership team at [membership@gbcsa.org.za](mailto:membership@gbcsa.org.za) to set up an introductory session. Our team is ready to answer any queries you may have about membership benefits, categories, or the application process.

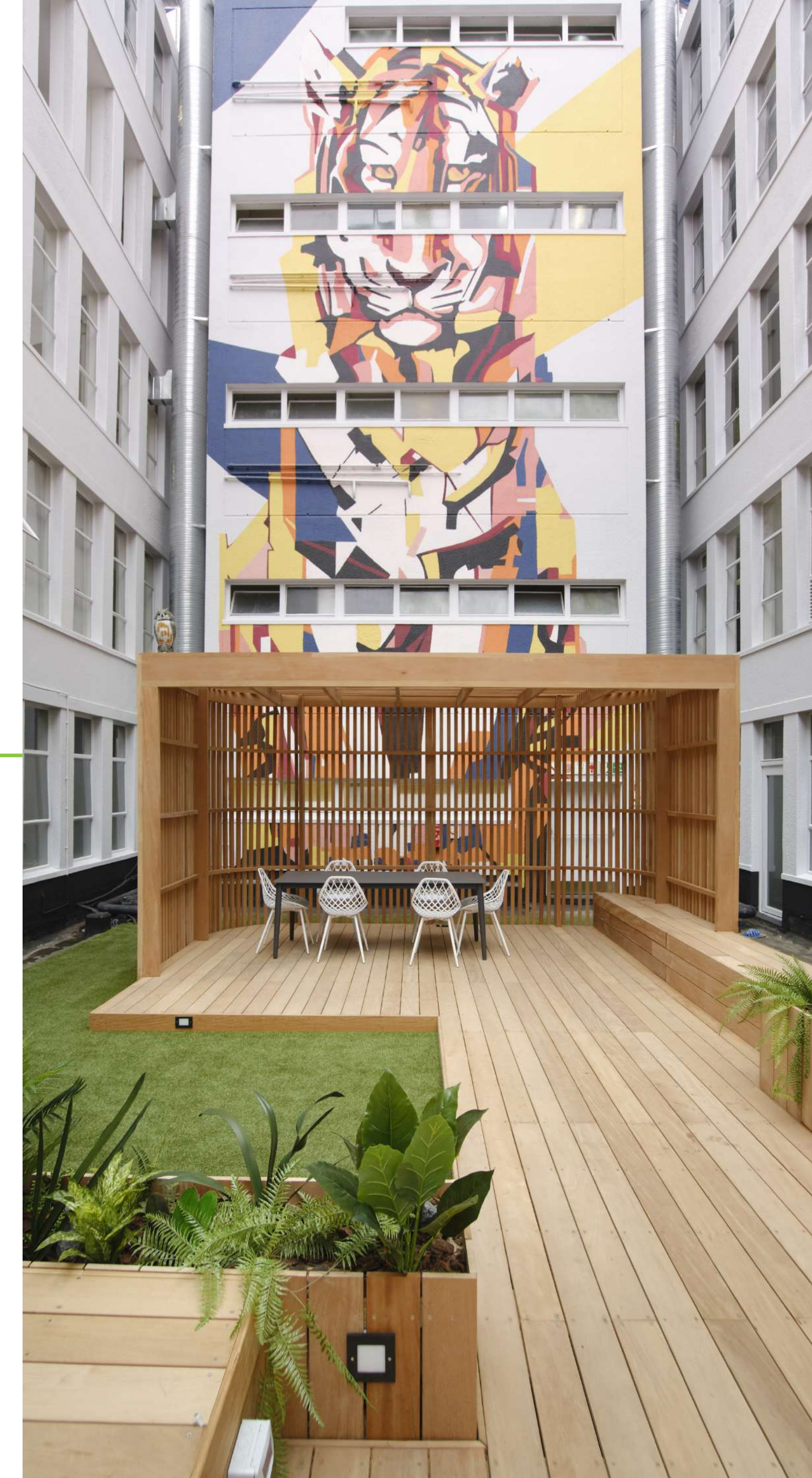
Set up a call with one of our team

Join online today

## Membership fees

Membership fees offer unbeatable value, and are a cost effective way of supporting organisations and individuals in meeting their sustainability goals.

Annual Fee Period: Our membership period covers the calendar year (1 January – 31 December) – although we welcome new members at any time of the year.



# Application Process



## Step 1

### Choose your membership category

→ [Click here](#)

and select the membership category that best suits your needs.

- **Organisational Membership**

- › Property Developers
- › Investors, Owners, Property Managers
- › Related Interests: Utilities, Financial, Insurance
- › Major Corporate Tenants & Retailers
- › Building Contractors
- › Building Product Manufacturers & Distributors
- › Professional Services
- › Research, Higher Education, NGO's & Regulators
- › Government

- **ONE Membership**

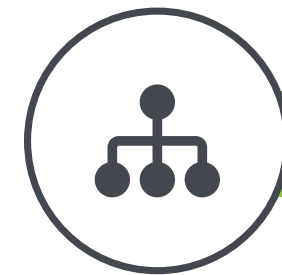
A popup window will open, prompting you to register your profile on the GBCSA website's member platform, the Hub.



## Step 2

### Register your personal profile

Fill in the form with your personal information to create your profile.



## Step 3

### Create your organisation's profile

If you're signing up for an organisational membership and your organisation is not yet registered with the GBCSA, select 'Register a new organisation'.

- Enter your organisation's information, along with the principal and billing contact details. These can be the same person.
- If your organisation is already registered, simply select its name from the drop-down menu.
- Agree to the privacy policy and click 'Register'.

Individual members are not required to create an organisational profile.

A confirmation popup will appear once your registration is complete.



## Step 4

### Receive your membership invoice

Once registered, our team will review your submission. Within 48 hours, you will receive an email with a pro-forma invoice. Payment instructions will be included. Payment can be made via bank transfer, credit card, or other accepted methods.



## Step 5

### Pay your membership fees

Upon receiving your payment, your membership will be activated. You can verify this on your GBCSA Hub profile.



## Step 6

### Welcome to the GBCSA!

Once your membership is activated, you'll receive a confirmation email, along with a digital welcome package. This package will include:

- Instructions for downloading your membership certificate and exclusive member logo pack.
- Information about upcoming GBCSA events and opportunities.

For any questions or assistance during the application process, please contact our **Membership Team** at [membership@gbcса.org.za](mailto:membership@gbcса.org.za) or call 08610 42272.



# Membership Fees 2026

Category	Size	Annual Fees*
<b>Property Developers</b>  Fees based on Annual Turnover	Up to R 20 million	13 790
	R 20 - R 50 million	27 090
	R 50 - R 100 million	48 100
	R 100 - R 250 million	66 510
	R 250 million+	92 880
<b>Investors, Owners, Property Managers</b>  Fees based on Total Asset Value	Up to R 50 million	13 790
	R 50 - R 100 million	27 090
	R 100 - R 500 million	48 100
	R 500 - R 2 billion	66 510
	R 2 billion+	92 880
<b>Major Corporate Tenants &amp; Retail</b>  Fees based on Annual Gross Rentals	Up to R 1 million	7 090
	R 1 - R 5 million	20 300
	R 5 - R 15 million	40 100
	R 15 - R 25 million	53 310
	R 25 million+	79 670
<b>Building Contractors</b>  Fees based on Annual Turnover	Up to R 5 million	7 090
	R 5 - R 20 million	13 790
	R 20 - R 50 million	27 090
	R 50 - R 150 million	48 100
	R 150 - R 500 million	66 510
	R 500 million+	92 880
<b>Building Product Manufacturers &amp; Distributors</b>  Fees based on Annual Turnover	Up to R 5 million	7 090
	R 5 - R 20 million	13 790
	R 20 - R 50 million	27 090
	R 50 - R 150 million	48 100
	R 150 - R 500 million	66 510
	R 500 million+	92 880

Category	Size	Annual Fees*
<b>Professional Services - Architects, Designers, Engineers, Quantity Surveyors, PM's, Consultants, Legal</b>  Fees based on # of employees	1 - 5 Employees	4 470
	6 - 20 Employees	13 790
	21 - 50 Employees	27 090
	51+ Employees	48 100
<b>Research, Higher Education, NGO's &amp; Regulators</b>	NGO	7 090
	Research/Higher Edu/Regulators	20 300
<b>Related Interests: Utilities, Financial, Insurance, etc.</b>  Fees based on Annual Turnover	Up to R 50 million	13 790
	R 50 - R 150 million	27 090
	R 150 - R 500 million	48 100
	R 500 - R 2,5 billion	66 510
	R 2,5 billion+	92 880
<b>Government**</b>	Local Municipality / Constitutional Institutions / Public Entity (Cat 3A/3C)	13 790
	Metropolitan Municipalities	27 090
	Provincial Government Dept / Public Entity (Cat 3A/3C) Public Business Enterprises (Cat 3B/3D)	48 100
	International or Regional Govt / Public Entity	66 510
	National Govt Department / Major Public Entity (schedule 2) / Public Entity (Cat 3A/3C)	92 880
	<b>ONE Member</b>	Individual

\* Membership Fees are paid annually (January to December).

\*Fees are in ZAR and inclusive of VAT.

\*\*For Government members, Category 3A and 3C are advised to contact GBCSA to clarify the correct membership category.

# Contact

## Be part of Leading the Change, Today

Join us as a member of the GBCSA community today, and enjoy valuable benefits while and contributing to transforming our built environment, for people and planet to thrive.

Set up a call with one of our team

Join online today



## Contact details

**Email:** [membership@gbcsa.org.za](mailto:membership@gbcsa.org.za)

**Phone:** 021 486 7900 or 08610 42272

**Website:** [www.gbcsa.org.za](http://www.gbcsa.org.za)

**Address:** Ground Floor, Birkdale House 1 River Park,  
Gloucester Road Mowbray, Cape Town, 7700

## Connect with Us

Stay updated with our latest news, events, and green building insights by signing up to our newsletter, and following us online.

Sign up for  
our newsletter

Connect with us online



Join us in leading transformation towards  
a sustainable and resilient built environment.

**Together, we can make a difference.**

