

DESIGNING FOR GREATER EFFICIENCY (DFGE)

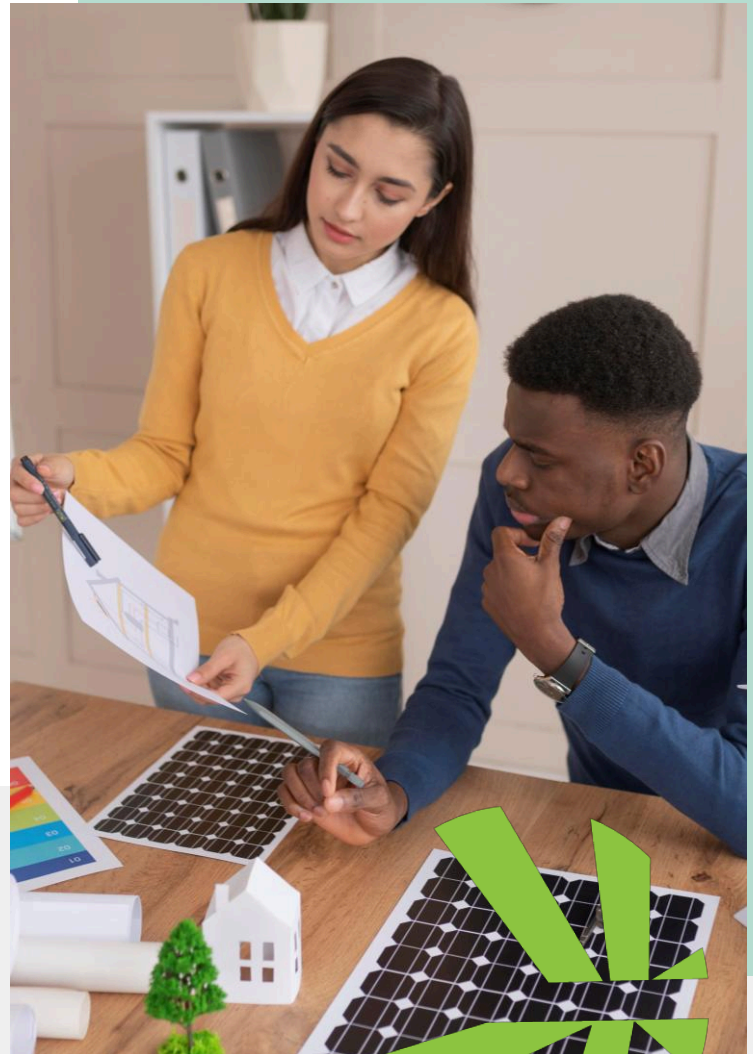
Fast track your green building credentials with this three day course on the fundamentals of green building design.

Whether you're a senior building design student or industry professional, the DfGE Course can empower you with the skills and knowledge to make an impact, and position you to successfully support green building projects.

The course is ideal for those learning or working in architecture and related fields, such as structural and building services engineering, quantity surveying or construction. As a participant you'll learn the fundamentals of energy and resource efficiency in building design from a technical and commercial perspective. Through the use of case studies and examples, you will deepen your understanding of bioclimatic and resource-efficient design, as well as learn how to sell those designs in a commercial setting.

Register online or reach out the GBCSA Academy to explore bespoke options for your team.

 **Register your interest**

The logo for Edge, featuring the word "Edge" in a stylized blue font with a green geometric shape to the left. **IFC** | **International
Finance Corporation**
WORLD BANK GROUP

Creating Markets, Creating Opportunities

DFGE was developed by IFC - International Finance Corporation, a member of The World Bank Group, and is delivered by GBCSA Academy's faculty of experts.

Course Outline and Certification

- Module 1** Green Buildings in Context
- Module 2** Form, Skin, & Climate
- Module 3** Engineering Architecture:
HVAC & Controls
- Module 4** Lighting & Photovoltaics
- Module 5** Water & Materials
- Module 6** Making the Business Case
- Module 7** Final Design Exercise

The final design project will be submitted online for evaluation by an assigned evaluator.

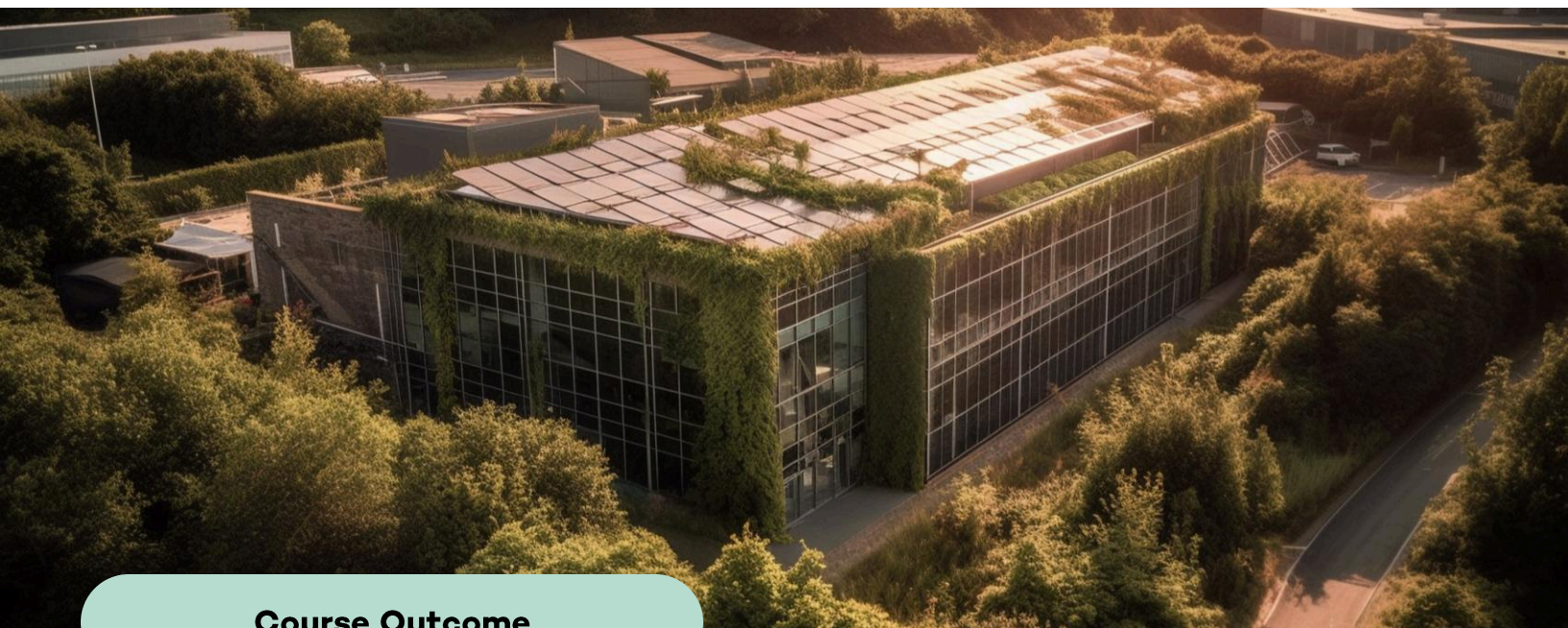
Upon successful completion of the final design project, students will receive a course certificate.

Course Fees

Please download the GBCSA Academy Pricing Brochure at the GBCSA Academy homepage for the latest fees.

GBCSA members, and students, enjoy discounted course fees.

 [Download Course Fees](#)



Course Outcome

On completing this course, participants will be able to:

- **Develop** critical thinking skills, quantitative skills, and design approaches
- **Conceptualize** and **integrate** green features across multiple disciplines and building types
- Quantify the impact of design strategies to reduce energy and water consumption in operations and embodied energy in materials using IFC's EDGE building design software
- **Articulate** a compelling business case for sustainable design
- **Communicate** design strategies and choices effectively with clients and other building stakeholders, including owners, investors, and other design team members
- **Demonstrate** knowledge of **green measures** and their relative cost-benefit implications

Find out more

Contact GBCSA Academy today to elevate you and your team's skills and expertise.
086 104 2272 or 021 486 7900
training@gbcsa.org.za

