



EXPERT & AUDITOR TRAINING

Formal training to set you up for success in the EDGE certification process.

GBCSA Academy's EDGE training provides appropriate skills development for professionals in their EDGE accreditation journey, empowering them to help shape the green buildings of the future.

The EDGE Expert programme prepares participants to take the EDGE Exam. The EDGE Auditor online workshop provides the latest content to refresh and sharpen skills required to achieve or maintain approved status as an EDGE Auditor or Auditor in Training.

The EDGE Expert programme is available online and on-demand, while the EDGE Auditor programme is delivered online in an interactive group workshop. GBCSA Academy is a recognised EDGE Training Agency.

EDGE training can be valuable to property developers, banks, investors, real estate agents, architects, engineers, quantity surveyors, project managers, contractors, sustainability consultants, students and anyone else involved in the design and construction of residential and commercial projects in South Africa.

[> Get More Info](#)



EDGE is a green building design tool, certification system and global green standard developed by the International Finance Corporation (IFC), a World Bank Group member.



Projects built to the EDGE standard deliver carbon emissions reductions, water savings and a lower cost of living for occupants.

GBCSA is an accredited EDGE training provider with the IFC.

GBCSA certifies EDGE projects in South Africa and throughout the rest of Africa. It is the body responsible for certifying projects at the Preliminary and Post-Construction stages.



EDGE TRAINING PATHWAYS

EDGE Expert Programme

An EDGE Expert precedes an EDGE Auditor, working within or in tandem with the client's design team.

Their scope of work includes advice on green design and assistance with the preparation of an application for EDGE certification.

EDGE Auditor Programme

An EDGE Auditor does not influence project design or make recommendations and only becomes involved once the project submission is received.

Their role is to review a building project submitted for EDGE certification and assess whether the building design and constructed building meet the EDGE requirements.



gbsa.org.za

COURSE OBJECTIVES

On completing the EDGE Expert programme participants will be eligible to take the EDGE Exam either at a testing centre or remotely.

COURSE CONTENT

Each EDGE course is made up of 6 modules, with content contextualised to the local African context.

Module 1: Introduction to GBCSA and EDGE

Here we will set the scene by exploring why there is a need to change how buildings are designed, built and operated, define what is meant by the term “green building”, look at certification as a strategy to achieve better, greener buildings and then locate EDGE into this context.

- Recognise the GBCSA’s purpose, vision and mission.
- Understand the background and purpose of EDGE.

Module 2: EDGE - The Vision

In this module, we will look at what we mean by certification, voluntary standards and rating tools and locate the EDGE standard within this landscape. IFC’s vision for EDGE globally will be explained and the use case for the tool presented. An understanding at a high level of the scope of the tool, its structure and basic processes will be gained.

- Define EDGE and understand the EDGE vision.
- Identify the use case and benefits of EDGE.
- Recognise how EDGE sets green building standards.
- Understand an overview of the EDGE certification process.

Module 3: Defining Green Design

Here we will learn what is meant by green building, unpacking its characteristics and then dive into the three impact areas that are addressed by the EDGE tool.

- Define green building design.
- Recall the basic characteristics of green building design.



Module 4: EDGE Certification Methodologies, Resources and Expert Process

Here we dive into more technical details regarding how the tool works, how to seek support and your roles and responsibilities as an EDGE Expert.

- Explain how EDGE does calculations.
- Explain how EDGE creates base case buildings.
- Understand how users should utilise the EDGE software for support.
- Know how to access user guides for further support.
- Identify and use a range of available resources to aid in developing yourself as an EDGE expert.

Module 5: The EDGE Certification Process

This module explains the EDGE certification process and the roles of various players throughout. It also unpacks the various documentation requirements for the submission.

- Recall the aim and process of EDGE certification.
- Recognise each stage of the certification process.
- Identify the roles and responsibilities involved throughout the process.
- Describe all documentation and submission procedures for EDGE certification.

Module 6: EDGE Green Measures

We look at the measures that can be included in your building design to improve its performance and contribute towards an EDGE certification. You will also have the opportunity to test your understanding of how the software works through a practical case study.

- Understand how demand is reduced by passive elements.
- Recognise how to reduce energy usage by systems.
- Identify when to reduce demand by supplying renewables.
- Identify key water efficiency measures.
- Understand how to lower embodied energy through the efficient use of materials.



GBCSA
ACADEMY

COURSE FORMAT

Participants have the option to choose online learning OR live webinar format.



Online Learning

Duration: 6 modules of approximately 1 hour each.

Flexible, self-managed online learning on our e-learning platform. Complete it at your own pace and in your own time. Includes video, eBooks, quizzes, useful downloadable resources and references



Live Stream Webinar

Duration: 6 hours.

Interactive workshop session facilitated by EDGE Faculty members.

Engage in real-time, ask questions and receive immediate feedback.

OR

ENTRY REQUIREMENTS

EDGE Experts are required to have a higher education qualification (at least a bachelors degree) in a construction industry-related field, OR three years' experience in a construction industry-related field and a higher education qualification (bachelors degree) of any kind. Get more info [here](#).



GBCSA
ACADEMY



[> Book your EDGE Training](#)

EXAM FAQ

What is the EDGE Exam? Where can I take it? How much is it?

The EDGE Exam is administered by Prometric (a third-party testing centre) and currently costs USD 100. A complete list of test centre locations may be found [here](#). You may also take the EDGE Exam from the comfort of your home or office as long as your workspace and computer meet Prometric's requirements. The Exam consists of 75 multiple-choice questions that must be completed within a 2.5-hour time limit. All exams are closed-book. The exam is currently available in English, Chinese, Spanish, Portuguese, French, Vietnamese, and Indonesian Bahasa. Please contact edgeexam@ifc.org with any additional questions about the EDGE Exam.

How do I prepare to pass the EDGE Exam?

Successful completion of this workshop is required to be eligible to sit for the EDGE Exam. While the workshop serves as your best preparation for the EDGE Exam, you should expect to invest significant additional time studying technical materials like the EDGE Methodology Report, EDGE User Guide, and IFC's EDGE Protocols before you attempt to take the EDGE Exam. You can also check out our tips on how to pass the EDGE Exam on your first try from our past students. Finally, you may wish to test your knowledge with sample exam questions and take the official EDGE practice exam via Prometric (USD 30, payable to Prometric).

Can I retake the EDGE Exam if I do not pass the first time?

You may retake the EDGE Exam once more within two months of your first attempt. Retaken exams will be different from the original EDGE Exam. Each exam attempt will cost \$100 (paid to Prometric). If you do not pass the exam within the specified time you will have to retake the training. Please note that you will have full access to the workshop for 12 months after purchase.

EDGE Expert

EDGE Auditor Programme

ONLINE WORKSHOP

This interactive online workshop session is facilitated by EDGE Faculty members to support EDGE Auditors in their roles in the EDGE certification and assessment process. It provides an opportunity for participants to engage in real-time, ask questions and receive immediate feedback, as well as to connect with like-minded professionals. Duration: Approximately half a day

Content includes:

- Introduction to GBCSA and EDGE
- EDGE Process Overview
- EDGE Project Registration
- EDGE Certification: Design Audit Preliminary Certification
- Post Construction Audit
- Final Edge Certification



ENTRY REQUIREMENTS

As a guideline, EDGE Auditor candidates must meet all of the following criteria:

- Be a current EDGE Expert (including completing the EDGE Experts training and passing the EDGE Exam).
- Hold a higher education qualification in a construction industry-related field.
- Have three years of practical work experience in the construction industry. Note experience in green building certification, with at least one certified project is preferred.

The full set of requirements is available for reference from the latest [EDGE Licencing Protocols document](#).

ABOUT EDGE AUDITOR STATUS

To maintain approved status, EDGE Auditors must either:

- Undertake at least one (1) building project audit every two (2) years; or
- Attend refresher training of at least 4 hours every two years; or
- Retake the EDGE exam after approval from the EDGE Partner / GBCSA.

[> Explore EDGE Protocols](#)



EDGE Auditor



BOOK TODAY



Contact us today to get yourself or your team on the GBCSA Academy learning journey. We are happy to supply detailed info such as upcoming learning events and pricing, as well as answer any queries.

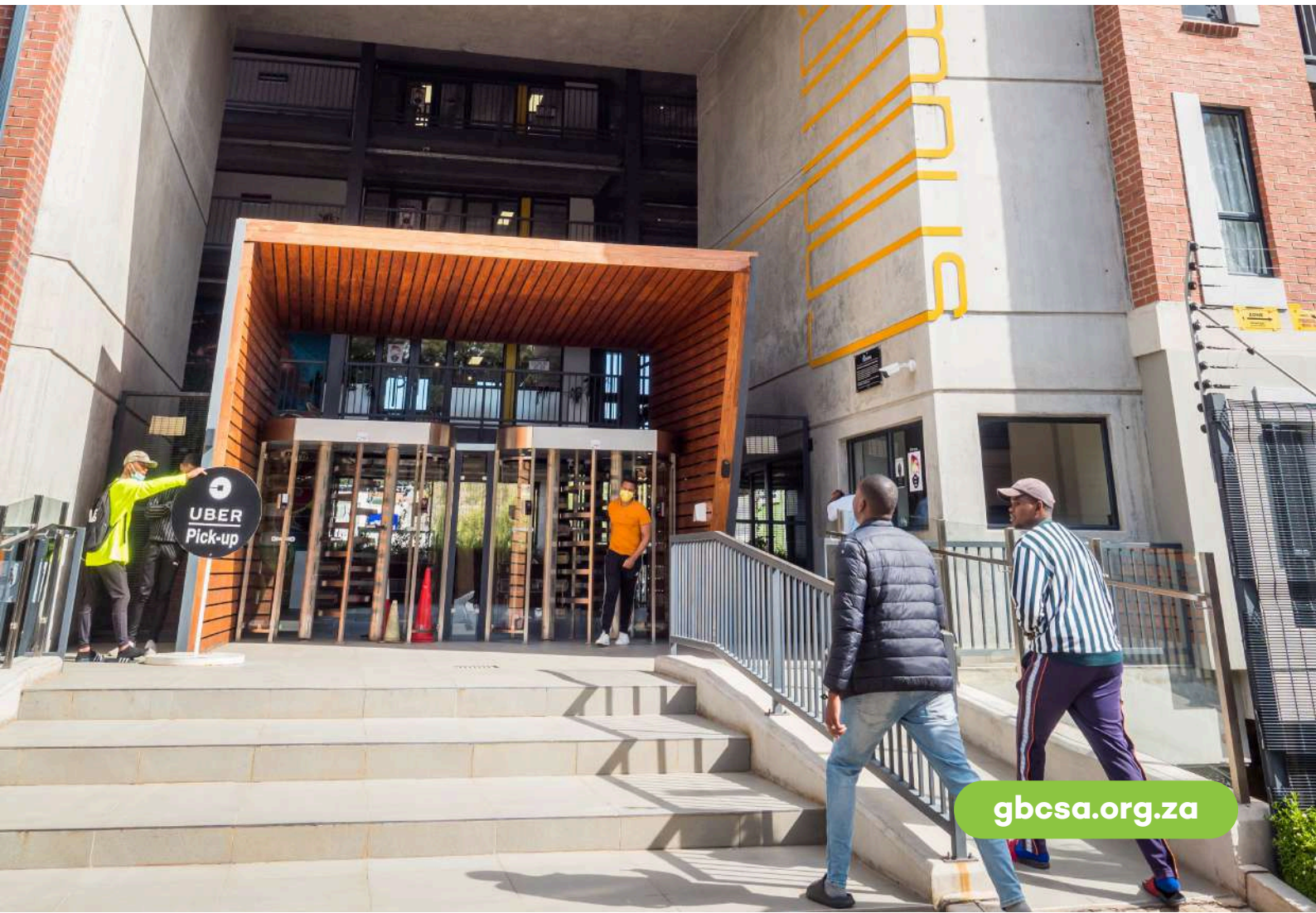
Gretchen Williams (Education Manager)

Email: training@gbcsa.org.za

Tel: [+27 21 486 7900](tel:+27214867900)

Are you looking for a specific training solution? We are also able to provide customised training for groups, which can also include classroom instruction and other customised solutions.

[> Book Today](#)



gbcsa.org.za